

bodyography®

---

PROFESSIONAL COSMETICS

PARABEN FREE • SIN PARABENES • SANS PARABÈNE  
[www.bodyography.com](http://www.bodyography.com)



Be Bold.  
Be Brilliant.  
Be You.

# MEET BODYOGRAPHY.

A BEAUTY BRAND YOU CAN COUNT ON.

Siden begyndelsen i de tidlige 90'ere, er Bodyography blevet en af de førende indenfor udvikling af professionel kosmetik i over 45 lande fordelt på 6 kontinenter.

Bodyography har opretholdt sit upåklagelige omdømme ved fortsat kun at anvende de fineste ingredienser, komponenter og pigmenter af højeste kvalitet, for at skabe iøjne-faldende og opsigtsvækkende kosmetik.

Hele serien af professionel kosmetik er udviklet til at passe til enhver person og lejlighed, lige fra professionelle saloner til backstage make-up artister og den moderne kvinde.

Vi stræber efter at gøre Bodyography til den eneste make-up løsning du mangler, har brug for og ønsker.

VEGAN • CRUELTY – FREE • FASHION DRIVEN • ANTIOXIDANT INFUSED • PROFESSIONAL QUALITY



“My heart is in every color you swipe on your lips and glitter you pat on your eyes. My dream and vision are seen within everything you create with our products. I am very lucky to live such a colorful life, and I promise to continue to be loyal to you, our customers and support your journey through the colorful world of beauty.”

**Lori Leib - Creative Director  
at Bodyography**

## Hvad står vi for

Bodyography bygger bro mellem professionelle make-up artister og alle som bare elsker god make-up. Vi bringer kvalitet, innovation og ren skønhed til alle. Vi tror på at forenkle skønhed, omfavne farver, kaster os hovedkulds ind i trends og eksperimenterer med nye looks. Vi omfavner helhjertet alt det, der gør dig modig, strålende og unik.

## Ren skønhed uden kompromis

Vores produkter er udviklet, designet og formuleret for at få dig til at se og føle dig bedst. Vi er lige så selektive med hensyn til, hvad der indgår i vores produkter, som hvad der er udeladt, og vi henter kun de fineste naturligt afledte, dokumenterede ingredienser. Hos Bodyography står vi ved vores etik, 'ren skønhed uden kompromis', hvorfor vi er 100 % Cruelty-Free og tilbyder en række vegansk-venlige muligheder med formler, der altid er FRI for talkum, triclosan, parabener, mineralolie, Sulfater, Bly og Gluten for at nævne nogle få. Hvad betyder 'ren skønhed uden kompromis' for os? Kombinerer trends og innovation med enestående kvalitet og ydeevne, og udelader det dårlige for at opleve det gode (lettere sagt end gjort, men vi er på en mission!).

## Ingredienser vi elsker

Vi har udviklet hudpleje og makeup i over 20 år; råvarer er vores speciale. Vores kreative direktør, Lori Leib, er altid på jagt efter spændende ingredienshistorier og nærende eliksirer verden over for yderligere at gavne alle vores produkter. Vi elsker at inkorporere superfood frø, olier, frugt, plante og nødder afledte ingredienser sammen med vitaminer, mineraler og antioxidanter (oh my!). Vi ønsker, at vores produkter skal være mere end det, der kan ses i øjnene

Bodyography® PRODUCTS ARE FEATURED IN LEADING EDITORIAL & TRADE PUBLICATIONS AND AVAILABLE IN OVER 50 MARKETS WORLDWIDE.

COSMOPOLITAN



InStyle

marie claire

REFINERY29

Health

allure

POPSUGAR. BYRDIE

“

*“What makes Bodyography so well-loved is the makeup artistry aesthetic that is accessible. The brand wanted to create products that were “combining trends and innovation with exceptional quality and performance.” The idea of having products that were not only affordable but also groundbreaking seemed too good to be true.”*

– SAMANTHA G. PARSONS, BYRDIE

*“When you want the look of an eye gloss without the goop of an eye gloss, these glitter pigments are the chameleons to reach for.”* – ALLURE

*“Makeup artist Katie Jane Hughes considers Bodyography’s mega-shiny pigments “hands down the best.”* – ELLE.COM

*“O magazine’s associate beauty editor, Erin Stovall, raves about Bodyography’s bold color payoff. “It has a creamy, non-gritty texture that makes it easy to apply with your finger and it delivers a crazy amount of shimmer that stays put. No primer or glue needed,” she says.”* – OPRAH MAGAZINE

*“Usually, I fall in love with a specific product (or two). Rarely do I fall in love with an entire brand. When I say rarely, I mean it—after a lifetime of being a self-proclaimed beauty buff, and over three years as a beauty writer, it’s only happened a handful of times. It happened when I tried Nars products, it happened when I tried Peach & Lily, and, most recently, it happened when I tried Bodyography.”* – KAITLYN MCLINTOCK, EDITOR BYRDIE.COM ”



MODEL: KAROLINA KRISTINA  
MAKEUP: KATIE JANE HUGHES  
PHOTOGRAPHER: BRINSLEY EDWARDS

bodyography®

## FOUNDATION PRIMER

1 oz / 30 g



- Extends the wear of Foundation & controls oil and shine
- Creates a uniform canvas for flawless makeup application
- Softens fine lines and wrinkles
- Non-comedogenic formula won't clog pores

- **Forlænger holdbarheden på foundation**
- **Sikker, selv for sart hud**
- **Udjævner hudfarven**
- **Udfylder fine linjer og rynker**

## CANVAS EYE MOUSSE

0.22 oz / 6.25 g



- Stops Eyeshadow from creasing and makes color appear more vibrant
- Anti-Aging treatment formula for use from lash to brow
- Can be used as a lightweight under eye concealer
- Softens fine lines and wrinkles around the eye area

- **Fåes i to farvekorrigerende nuancer**
- **Anti-aging formel anvendes fra vippekant til bryn**
- **Holder liner og pigmenter på plads hele dagen**



Clear  
Sku# 7050



Hydrating  
Sku# 9058



Purple  
Sku# 9052



Neutral  
Sku# 9051



Green  
Sku# 9053



Cameo  
Sku# 3580



Bisque  
Sku# 3581



# NATURAL FINISH FOUNDATION

1 oz / 30 g



- Long-wearing Oil-Free formula
- Medium to full coverage with a smooth, velvet finish
- Infused with healing Vitamin E

- **Langtidsholdbar formel**
- **Irriterer ikke den sarte hud**
- **Dermatologisk anbefalet - Vitamin E**
- **Olie fri formel**
- **Medium til Full dækning**



100  
Light/Neutral  
Sku# 7001



125  
Light/Cool  
Sku# 7003



130  
Light/Medium/Neutral  
Sku# 7004



150  
Light/Medium/Warm  
Sku# 7008



160  
Medium/Neutral  
Sku# 7010



165  
Medium/Warm  
Sku# 7011



200  
Medium/Dark/Warm  
Sku# 7007



# SILK CREAM FOUNDATION

0.296 fl. oz. / 8.40 ml



- Hydrates skin with Hyaluronic Acid
- African Rooibos Tea protects and treats dry and damaged skin
- Offers an instant, full coverage effect with a completely weightless feel
- Can be used with a cream contour and highlighting technique
- Perfect for photography & HD filming

- fugter huden med hyaluronic acid
- afrikansk rooibos tea beskytter og plejer tør og skadet hud
- giver en øjeblikkelig fuld dækkeevne, med en vægtløs fornemmelse
- kan bruges til at lave kontur og highlight teknikker
- perfekt til foto og HD filmning



01  
Fair  
Sku# 7101



02  
Light  
Sku# 7102



03  
Light / Medium  
Sku# 7103



04  
Medium  
Sku# 7104



05  
Medium / Dark  
Sku# 7105



06  
Dark  
Sku# 7106



07  
Deep  
Sku# 7107



08  
Rich  
Sku# 7108



\*Refills available upon request



MODEL: NICOLE DA COSTA



# PRO PERFECT FOUNDATION STICK

0.31 oz / 9 g



- A sheer-to-full-coverage Foundation Stick with a natural-looking, demi-matte finish
- Versatile formula ideal for all skin types
- Can be used as a multitasking complexion enhancer to conceal, highlight and contour
- Antioxidant Vitamins C & E nourish skin and help protect cells from free radical damage
- Aloe helps soothe and condition skin

- **En let-til-fuld-dækkende foundation stick med et naturligt udseende demi-mat finish.**
- **Ideel til alle hudtyper.**
- **Udjævner pigmentfejl og farvenuancer og skaber en fejlfri hud.**
- **Anti-oxidant C & E-vitamin og Aloe Vera som hjælper med at beskytte hudens celler mod den daglige påvirkning af miljøet og nærer huden.**
- **Tip Den perfekte contour stick.**



**Porcelain**  
Very Light/Cool  
Sku#7201



**Cream**  
Light/Neutral  
Sku#7202



**Sand**  
Light/Medium/Neutral  
Sku#7203



**Wheat**  
Light/Medium/Golden  
Sku#7204



**Golden**  
Medium/Neutral/Golden  
Sku#7205



**Honey**  
Medium/Warm/Olive  
Sku#7206



**Caramel**  
Medium/Warm/ Golden  
Sku#7207



**Maple**  
Medium/Deep/Warm  
Sku#7208



**Chai**  
Medium/Deep/Neutral  
Sku#7209



**Hazelnut**  
Deep/Neutral  
Sku#7210



**Latte**  
Deep/Warm/Olive  
Sku#7211



**Espresso**  
Deep/Cool  
Sku#7212

# SKIN SLIP FULL COVERAGE CONCEALER

0.10 oz / 3 g



- Revolutionary Full Coverage Concealer with flexible comfort and a flawless finish
- Lightweight silicones provide all day wear
- 35% pigment offers true color, coverage and comfort
- Infused with Vitamin E and Glycerin to nourish and hydrate the skin
- Light-as-air creamy and buildable formula with undetectable coverage
- Satin finish leaves skin looking seamless and lifts and brightens the complexion
- Ideal for all skin types

- **Alsiddigt produkt kan bruges som concealer eller som foundation**
- **Glycerin tiltrækker og holder på fugt**
- **Vitamin E: virker som et naturligt konserveringsmiddel**
- **Blød applikator for lækker og præcis påførsel**



L1  
Light/Cool  
Sku# 7511



L2  
Light/Warm  
Sku# 7512



L3  
Light/Medium/Neutral  
Sku# 7513



M1  
Medium/Golden  
Sku# 7514



M2  
Medium/Neutral  
Sku# 7515



M3  
Medium/Cool  
Sku# 7516



M4  
Medium/Dark/Warm  
Sku# 7517



D1  
Dark/Golden  
Sku# 7518



D2  
Deep/Warm  
Sku# 7519



D3  
Deep/Neutral  
Sku# 7520

PHOTO BY:  
NICOLE DA COSTA



## SUN DEFENSE TINTED MOISTURIZER

1 fl. oz / 30 ml



- Enriched mineral formula with lightweight & hydrating SPF protection
- Infused with vitamins and extracts to soothe and protect the skin
- Medium coverage that sets to a dewy finish
- Top quality foundation brush applicator for quick and easy application

- **Mineral formel**
- **Letvægts og fugtgivende solfaktor(uv) beskyttelse**
- **Beriget med vitaminer og ekstrakter, der beroliger og beskytter**
- **Børste applikator for let og hurtig påføring**



1  
Light  
Sku# 3011

2  
Medium  
Sku# 3012

3  
Dark  
Sku# 3013

## COVER + CORRECT UNDER EYE CONCEALER

CORRECT TOP: 0.088 oz / 2.5 g COVER BASE: 0.21 oz / 6 g



- A two-in-one problem solving product to correct dark circles, conceal, and brighten the under eye area
- Formulated to hydrate, nourish, and stimulate circulation around the under eye
- Caffeine stimulates circulation which diminishes dark circles

- **Et 2 i 1 produkt**
- **Korrigerer mørke rander og pigmentering med en orange corrector**
- **Den cremede concealer giver fuld dækkeevne**
- **Formuleret til at fugte, pleje og stimulere cirkulationen omkring øjenområdet**
- **Koffein stimulerer cirkulationen der mindsker mørke rander**



Light  
Sku# 7551

Medium  
Sku# 7552

Dark  
Sku# 7553



## EVERY FINISH POWDER

0.35 oz / 10 g



- Talc-Free, dual-finish treatment formula
- Can be used wet or dry as a setting powder or on its own as a medium to full coverage foundation
- Lightweight with a silky texture
- Controls oil and shine while enriching the skin with essential vitamins and minerals

- **forskellige påførings- metoder - kan anvendes i våd og tør tilstand**
- **Omfattende farveskala**
- **Afhjælper fedtet hud vha vitaminer og mineraler**
- **Efterlader huden blød og lækker**



**10**  
Light  
Sku# 7800

**40**  
Light/Medium  
Sku# 7806

**45**  
Medium  
Sku# 7807



**50**  
Medium/Dark  
Sku# 7808

**60**  
Dark  
Sku# 7810

**Translucent Powder**  
Sku# 1600

## BLUSH + BRONZER

0.10 oz / 3 g



- Creates a natural glowing complexion
- Lightweight and long wearing mineral formula
- Layers easily for color building

- **Transparente farver for en strålende glans**
- **Letvægts non- greasy formel**
- **Opbygges let for mere farve**



**Bashful**  
Matte/Powder  
Sku# 6516



**Afterglow**  
Matte/Powder  
Sku# 1700



**Flirt**  
Matte/Powder  
Sku# 6514



**Sand Dune**  
Matte Bronzer  
Sku# 6713

## FACE & BODY BRONZING GLOSS **V** **GF**

5.07 oz / 150 ml

- An instant Bronzing Gloss for face and body that imparts a radiant sun kissed glow that easily washes off with soap and water.
- Light weight and long wearing
- Infused with Jojoba Oil and Multifruit Complex
- Hyaluronic Acid hydrates and plumps the skin
- Coffee stimulates circulation and helps to smooth the look of the skin
- Golden and bronze pearls add sheen and glow to the skin
- One shade fits all

- **En instant Gloss til ansigt og krop, der giver en smuk glød**
- **Letvægts bronzer**
- **Rig på antioxidanter og anti-aging formel**
- **Indeholde hyaluronic acid som tilfører fugt**
- **En nuance der passer til alle**
- **vaskes af**



Face & Body  
Bronzing Gloss  
Sku# 1502

## HIGHLIGHTER Pressed Powder **V**

- A universally flattering golden illuminating powder with an ultra-smooth formula and radiant finish.

- **En universel kontur til fejlfri og naturlig fremhævning og konturering.**
- **Giver en guddommelig glød samtidig med at man ubesværet opnår en kontur effekt**



Sunsculpt Duo  
Bronzer/Highlighter  
Sku# 6520

0.35 oz / 10 g



From Within  
Highlighter  
Sku# 1802

0.29 oz / 8.38 g



## HIIGHLIGHTER Cream **V** **GF**

- A dual ended Highlighter and Essence stick to achieve a wet- looking luminance and a shimmering glow in just two easy steps

- **Highlighter med 2 funktioner**
- **Giver flot glansfuld effekt**



Highlighter  
0.12 oz / 3.6 g



Essence  
0.11 oz / 3.2 g



INNER GLOW STICK  
Sku #1801

## HIGHLIGHTER Loose Powder **V** **GF**

0.35 oz / 10 g

- A delicate ultra-fine shimmering loose powder designed to highlight, enhance and add luminosity to the hair, face and body
- **En delikat ultra fin skinnende løs pudder, skabt til at highlighte, forbedre og tilføje glans til håret, ansigt og krop**



Sun Soaked  
Sku #1803



Light Catcher  
Sku #1804



## TRIO EXPRESSION EYE SHADOW

0.10 oz / 3 g



- Long lasting, pigment-rich formula
- Layers easily for color building
- Available in shimmer and satin finishes
- Can be used wet or dry for desired effect

- **Langtidsholdbar intensiv pigmentering**
- **Opbygges let for mere intense farver**
- **Vandafvisende formel**
- **Nemt med farvenuancer til hver øjenfarver**



Blue Eye Trio  
Sku# 6577



Green Eye Trio  
Sku# 6575



Brown Eye Trio  
Sku# 6576

## EXPRESSION EYE SHADOW

0.10 oz / 3 g



- Multi-purpose product for cheeks, brows, eyes, and liner
- Long-lasting, pigment-rich formula layers easily for color building
- Can be used wet or dry for desired effect
- Available in Matte, Shimmer, and Satin finishes

- **Multifunktionelle skygger til kinder, bryn, øjne og liner**
- **Langtidsholdbar intensiv pigmentering**
- **Opbygges let for mere intense farver**
- **Findes i matte, shimmer og satin**
- **Anvendes både våd og tør**



Galaxy  
Shimmer  
Sku# 6519



Devoted  
Shimmer  
Sku# 6541



Sleek  
Shimmer  
Sku# 6561



En Vogue  
Shimmer  
Sku# 6555



Vixen  
Shimmer  
Sku# 6512



Raven  
Matte  
Sku# 6500



Mod  
Matte  
Sku# 6560



Truffle  
Matte  
Sku# 6502



Sable  
Matte  
Sku# 6501



Laguna  
Satin  
Sku# 6546



Creamsicle  
Satin  
Sku# 6517

# SHADOW STYLIST CRAYONS



0.07 oz / 2 g

- Long wearing, versatile creamy shadow stick
- Can be worn as a base, liner or all over color
- Built in sharpener in base.

- **Findes i 8 Flatterende farver, der komplimenterer enhver øjenmakeup.**
- **Langtidsholdbare, multianvendelige, cremede skygge penne**
- **Kan anvendes som basefarve, eyeliner eller øjenskygge.**
- **farvemættede og og holder hele dagen uden at smuldre.**
- **Indeholder penne spidser i skaffet.**



Aglow  
Sku# 4801

Coin  
Sku# 4802

Slate  
Sku# 4803

Orchid  
Sku# 4804



Cobalt  
Sku# 4805

Blush  
Sku# 4806

Copper  
Sku# 4807

Moss  
Sku# 4808



## GLITTER PIGMENTS



0.105 oz / 3 g

- Creates a metallic sheen on the lids
- Unique gel texture can be applied wet or dry with little-to-no fall out

- “One of a kind” øjenskygge teknologi
- Består af mættede pigmenter
- Har en blødhed som en creme og silkefølelsen fra pudder
- Giver en smuk glitter og perleagtig finish



Aura Glow  
Sku# 6788



Halo  
Sku# 6772



Prism  
Sku# 6770



Stellar  
Sku# 6773



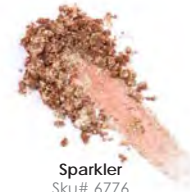
Blue Morpho  
Sku# 6789



Stratus  
Sku# 6771



Caviar  
Sku# 6775



Sparkler  
Sku# 6776



Solar Flare  
Sku# 6787



Bubbly  
Sku# 6777



Off the Hook  
Sku #6784



Celestial  
Sku #6778



Spirit Quartz  
Sku #6786

# CRYSTAL GLIDE LIQUID EYESHADOW

0.067 oz / 1.9 g



- A head-turning, long-wear Liquid Eyeshadow that delivers vibrant, high-shimmer color in a comfortable, crease-proof formula
- Infused with pure color pigments and crystal chrome pearls to deliver intense color with a buildable, no-feel finish
- Can be used as an eyeliner to create sultry eye looks
- Non-transfer base with minimal fallout—no primer necessary

- **Pigmenteret flydende øjenskygge, med intense glitter farver**
- **tilsat rene farvepigmenter og krystal krom perler, som giver en flot levende og intens farve, der er nem at bygge op**
- **Kan bruges som eyeliner, skygge og highlighter**
- **Behøver ingen primer**



Moonstone  
Sku# 4841



Citrine  
Sku# 4842



Garnet  
Sku# 4843



Smoky Topaz  
Sku# 4844



Ruby  
Sku# 4845



Rose Quartz  
Sku# 4846

## GEL EYE LINER DUO



0.12 oz / 3.4 g

- Modern alternative to traditional liquid eyeliner
- Can be smudged for a smokey eye effect when first applied
- Long wearing
- Can be used on brows

- **Moderne alternativ til traditionel eyeliner**
- **Kan udtones for at opnå smokey eye effekt når den er påført**
- **Holder længe og kan bruges på bryn**



Espresso Noir  
Sku# 3592

## ON POINT LIQUID LINER PEN



0.019fl. oz / 0.55 ml

- Creates thin, fine lines, and bold dramatic strokes
- A precise marker-like tip evenly disperses the perfect amount of product with every stroke
- Long-wearing and quick-dry formula

- **skaber tynde fine linjer til flotte dramatiske øjne**
- **en præcis spids giver den perfekte mængde produkt ved hver påføring**
- **langtidsholdbar og hurtigt tørende formel**



On Point  
Sku# 3593



## EYE PENCIL



0.04 oz / 1.1 g

- Durable pigment for extended wear
- Goes on smooth without dragging
- Infused with Coconut Oil
- Available in water-resistant and traditional formulas

- **Varige pigmenter med udvidet holdbarhed**
- **Lækker blød påføring**
- **Sikker til sarte øjne**



Black Magic  
Long-Wear  
Sku# 9209



Onyx  
Sku# 9254



Black Walnut  
Sku# 9257



Virgin  
Sku# 9260



## BROW TRIO

0.10 oz / 3 g



- Create bold and beautiful brows for every hair color
- Can be used as shadow and liner
- Highly pigmented mineral powder

- **Skab dristige eller smukke bryn til enhver hårfarve**
- **Kan anvendes som skygge og liner**
- **Høj pigmenteret mineral pulver**



Essential Brow Trio  
Sku# 3595

## BROW ASSIST

0.007oz / 0.2g



- A uniquely slanted retractable tip allows for a customizable application
- Formulated with long wearing pigment rich color and a blend of conditioning minerals, waxes and emollients for a fade proof look that lasts all day
- A bristle brush is attached at the end of the pencil to soften and comb through brow hairs for a naturally defined look

- **En unik form på blyanten der tillader en personliggørelse af brynet**
- **Formel med langtidsholdbare pigmenter og en blanding af plejende mineraler, voks og blødgørende ingredienser der skaber et professionelt look der holder hele dagen**
- **Penslen i den ene ende gør det muligt at skabe et blødt naturligt look.**



Brown  
Sku# 3536



Taupe  
Sku# 3535

## EPIC LASH

0.3 fl.oz / 10 ml



- Jet-black lengthening, curling, volumizing and conditioning mascara with a unique silicone double-sided comb wand for ultimate lift and curl.

i ?fUZ[ YfY j ]ddYf'a YX'K ]XY`Ug\ ;  
...]bXY\c`XYbXY'dfcj ]Ua ]b'6) "  
i`6Y\U[ Y`][ 'U`!XUma UgWUfYžXYf]\_Y  
...g ° fYfY`YfXfmgYf"



Epic Lash  
Lengthening & Curling  
Sku# 9320

## DRAMAT-EYES

Primer: 0.20 oz / 5.7 g Mascara: 0.22 oz / 6.3 g



- Get a double dose of beauty and health with this dual ended priming and volumizing treatment mascara.

▽ **Dobbelt effekt med både fylde og pleje**



Dramat-Eyes  
Primer + Mascara  
Sku# 9315

# EXFOLIATING LIP DUO



SOLID OIL: 0.07 oz / 2 g SCRUB: 0.26 oz / 7.5 g

- Easily absorbed, Marula Oil is ideal for dry and sensitive skin – the perfect partner for smooth, kissable lips.
- Small sugar crystals exfoliate the lips buffing away dry skin and leaving lips soft and conditioned

i UVgc fVYfYg bYa hza Ufi U'c] Yf] XY Y`h` b` f` c`  
 ...g`y` b` g` h` j` \ i X  
 j XYhdYfZ \_fY` a UWX h` V` »XY` ?ngVUfY` ° VYf  
 j VYf] Yha YX` Uj` cWUXc` c] zVzVzbi hc] za Ub[ c  
 ...Vi hYf` c[ g` YU` Vi hYf` z` fY` g` fU` b` ° f] b[ ` c[ \Y` ] b[  
 j d` Y` Y` b` X` Y` z` f` a` Y` Y` z` Y` f` U` X` Y` f` ° VYf` b` Y` g` n` b` Y` b` X` Y`  
 ...z` n` X` ] Y` f` Y` c[ ` V` »XY` f` Y` h` ` X` Y` b` d` Y` f` Z` \_f` Y` d` €` z` f] b[ ` U` Z`  
 ...a` U` \_Y` !` i` d`  
 j ga €` g` \_` Y` f` \_` f` m` g` t` U` \_` Y` f` Y` \_` g` z` ] Y` f` Y` f` ° VYf` b` Y` c` [  
 ...g` \_` f` i` V` V` Y` f` h` b` f` \ i` X` U` Z` g` €` X` Y` Z` Y` f` U` X` Y` g` V` »XY`  
 ...c` [ ` d` Y` Y` X` Y`



-  Exfoliating Lip Duo Solid Oil
-  Exfoliating Lip Duo Scrub
- Sku# 9122

# LIP PENCIL



0.04 oz / 1.1 g

- Durable pigments for extended wear
- Goes on smooth without dragging
- Infused with Coconut Oil & Vitamin E

- **Varige pigmenter med udvidet holdbarhed**
- **Lækker blød at påføre**
- **Indeholder kokos olie og vitamin E**



Barely There  
Sku# 9226



Timber  
Sku# 9222



Heatherberry  
Sku# 9223



Merlot  
Sku# 9221



Rosewood  
Sku# 9218



Crimson  
Sku# 9225



Pouty  
Sku# 9227

# LIP LAVA LIQUID LIPSTICK

0.08 fl.oz / 2.4 ml



- Bright, Bold, Ultra-soft Matte & Metallic Finishes
- Long wearing formula goes on opaque, dries instantly and lasts for hours
- 3x more pigment than those on the market
- Micro absorb technology makes color bulletproof

- **Dristig, ultra mat & Metallic finish**
- **langtidsholdbar formel, der dækker helt, tørrer med det samme**
- **3 x mere pigment end andre på markedet**
- **mikro absorberende teknologi gør farven sikker**



**Candy**  
Sku# 9601



**Petal**  
Sku# 9602



**Basic**  
Sku# 9604



**Crystal Moon**  
Sku# 9605



**Rose Moon**  
Sku# 9606



**Regal**  
Sku# 9609



**Brick**  
Sku# 9610



**Naked**  
Sku# 9615



**Au Naturel**  
Sku# 9616



**In the Buff**  
Sku# 9617



**Exposed**  
Sku# 9618



**Stripped**  
Sku# 9619



**Stark**  
Sku# 9620



**Free Spirit**  
Sku# 9623



**Heartbreaker**  
Sku# 9626



**Jet Setter**  
Sku# 9622



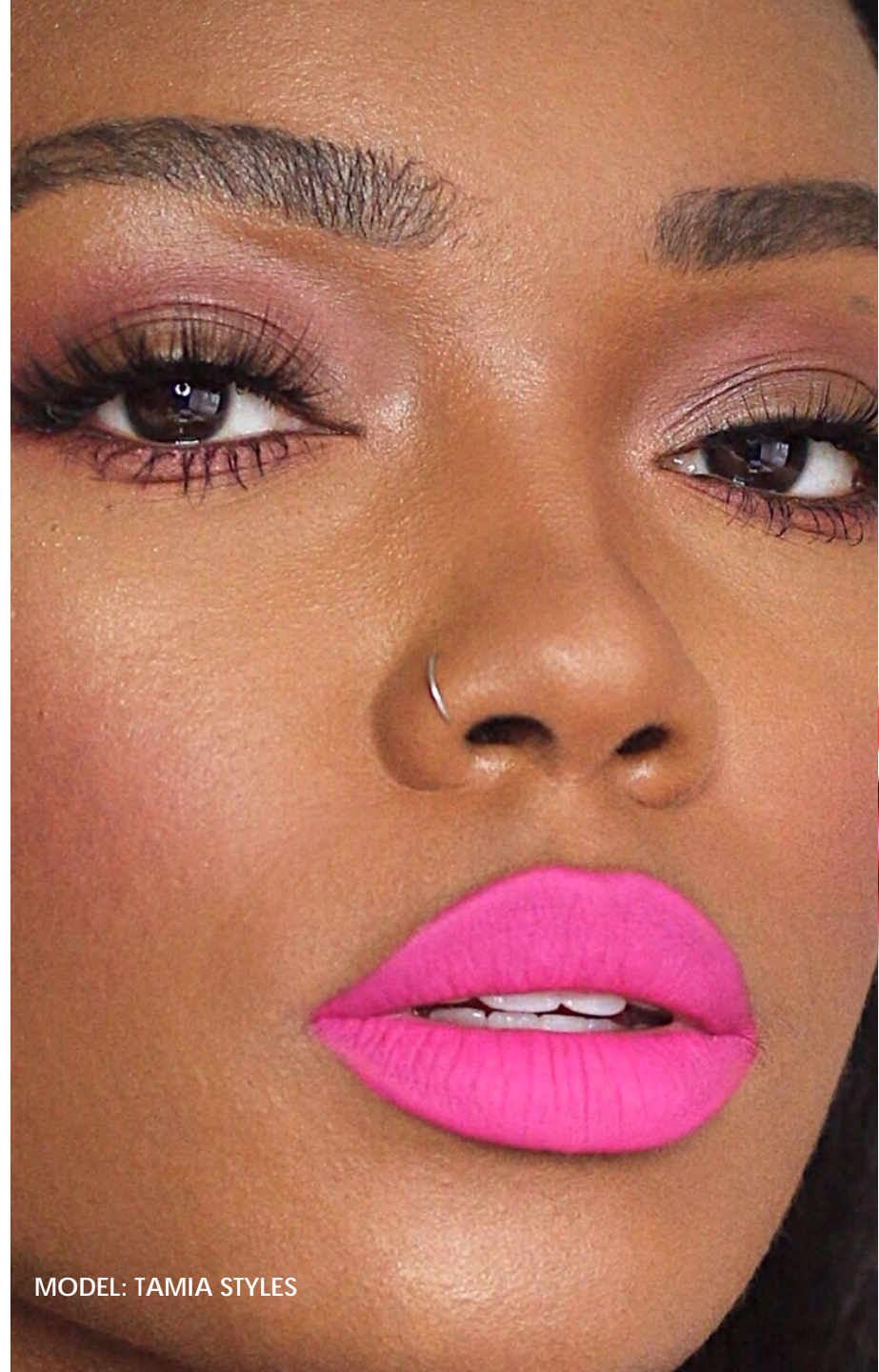
**Thrill Seeker**  
Sku# 9624



**Superstar**  
Sku# 9625



**Queen Bee**  
Sku# 9627



MODEL: TAMIA STYLES



## FABRIC TEXTURE LIPSTICK

0.158 oz / 4.5 g



- Long wearing pigment
- Demi-Matte opaque finish
- Powder pigments are light as air
- Infused with moisturizing Jojoba and Coconut Oil

- **kræffulde pigmenter der giver lækker dækkeevne**
- **let mat look, der aldrig føles eller ser tør ud.**
- **Pulver pigmenter der er "lette som luft" så man ikke ænser at have den på**



## LIPSTICK

0.13 oz / 3.7 g



- Rich mineral pigments offer amazing color payoff
- Goes on smooth without dragging
- Aloe Vera based formula hydrates and protects
- Available in Satin Matte, Cream, and Shimmer finishes

- **Varige pigmenter med bedre holdbarhed**
- **Lækker blød at påføre**
- **Baseret på Aloe Vera**
- **Tilfører fugt og beskyttelse**
- **Findes i satin matte, cream og shimmer**



Smile  
Cream  
Sku# 9190



Red China  
Cream  
Sku# 9102



Seductress  
Cream  
Sku# 9415



Maple Sugar  
Cream  
Sku# 9114



Ooh La La  
Cream  
Sku# 9117



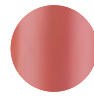
Mistral  
Shimmer  
Sku# 9164



Sorbet  
Shimmer  
Sku# 9109



Elizabeth  
Satin/Matte  
Sku# 9127



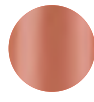
Jane  
Satin/Matte  
Sku# 9128



Jo  
Satin/Matte  
Sku# 9130



Anna  
Satin/Matte  
Sku# 9131



Pop the Question  
Matte  
Sku# 9103



Unrequited Love  
Matte  
Sku# 9107

## LIP GLOSS

0.3 oz / 8.5 g



- Lightweight and durable pigments
- Aloe Vera based formula goes on smooth without dragging and is never sticky
- Available in Sheer, Cream, and Shimmer finishes

- **Letvægts gloss med holdbare pigmenter**
- **Non-sticky formel**
- **Lækker blød at påføre**
- **Baseret på Aloe Vera**



Shy  
Cream  
Sku# 9009



Shine  
Shimmer  
Sku# 9012



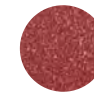
Mirage  
Shimmer  
Sku# 9022



Lux  
Shimmer  
Sku# 9003



Cherry Pop  
Sheer  
Sku# 9002



Darling  
Sheer/Shimmer  
Sku# 9004

# EYE SHADOW PALETTES



Perfect Palette  
Sku# BD-E-PERFECTPAL



Pure Pigment Palette  
Sku# BD-E-PUREPIGPAL



Forever Summer  
Sku# BD-E-6584



Disco 'Til Dawn  
Sku# BD-E-6580



Vivid Bright  
Sku# BD-E-6582

## READY SET GO

6 fl.oz / 177 ml



- Keeps makeup vibrant all day
- Smooths skin and stops makeup from caking
- Prevents Blush, Shadow, Foundation and lip color from fading and skin from becoming excessively shiny

- **simpel spray applikation der kan bruges på farten**
- **kan bruges på alle hudtyper og i alle klimaer**
- **kan bruges før og efter make-up applikation til at forberede og sætte make-up'en**

## BLUR, SET, PERFECT

0.35 oz / 10 g



- An ultra-lightweight, translucent loose setting powder
- Hyaluronic Acid promotes plump and hydrated skin
- Imparts a soft-focus finish
- One shade fits all

- **Hyaluronic Acid giver plejet og fugtet hud**
- **Ingen talkum eller tilstoppende ingredienser**
- **Silke Finish, aldrig tør eller pudret**
- **Gennemsigtig nuance der fungerer på alle hudtyper og toner**



Ready Set Go  
Makeup Setting Spray  
Sku# BD-PS-07



Blur, Set, Perfect  
Loose Finishing Powder  
Sku# BD-FP-7814



## ANTI-BACTERIAL SANITIZING SPRAY

4 fl. oz. / 118 ml



- 60% Ethanol Alcohol effectively eliminates more than 99.99% of many common harmful germs and bacteria
- 15% Benzalkonium Chloride, a broad spectrum anti-microbial removes bacteria, germs and viruses from surfaces
- Watermelon & Quinoa Extract provide moisture to the skin, effectively purifying hands without drying the skin
- Rose Water essence provides a refreshing aroma

- **60% ethanol alkohol fjerner effektivt mere end 99,9% af almindelige skadelige bakterier**
- **15% Benzalkonium Chloride, et bredspektret Anti-mikrobiel, fjerner bakterier og virus fra overflader.**
- **Vandmelon og Quinoa Ekstrakt tilfører fugt til huden og renser effektivt uden at udtørre**
- **Rosenvand essens giver en forfriskende duft**
- **Hurtigt tørrende, langtidsholdbar og fugtgivende**

## DUAL PHASE MAKEUP REMOVER

5.8 fl. oz. / 172 ml



- A gentle and effective long-wearing and waterproof makeup remover
- Water based
- Infused with Aloe and Camellia Extracts
- Fragrance Free

- **Parfume fri**
- **Vand baseret**
- **en mild og effektiv vandfast make.up fjerner**



Anti-Bacterial Sanitizing Spray  
Sku# BD-PS-10



Dual-Phase Makeup Remover  
Sku# BD-PS-09

A professional and functional line to target the needs of both Professionals and Consumers. PRO products with multi-purpose solutions. Items you can't live without for the artist in all of us!

**Profesional serie der både er for den professionelle make-up artist og for slut brugeren, masser af produkter der kan bruges til flere løsninger, produkter du slet ikke kan undvære.**



**Makeup Brush Cleanser**  
Limpiador de brochas anti bacterial  
Nettoyant pour "pinceaux à maquillage"  
Sku# BD-PS-03



**Cleansing Wipes**  
Toallitas limpiadoras y calmantes de la piel  
Lingettes nettoyants  
Sku# BD-PS-01



**Anti-Bacterial Pencil Sharpener**  
Sacapuntas de lápices anti bacterial  
Taille-crayons antibactérien  
Sku# BD-PS-02



**Disposable Applicator Kit**  
Kit de aplicadores desechables  
Kit d'application jetable  
Sku# BD-PS-06



**Artistic Mix Palette**  
Paleta de mezcla artística  
Palette artistique  
Sku# BD-PS-04  
**Spatula**  
Espátula  
Spatule  
Sku# BD-PS-05

## SYNTHETIC MAKEUP BRUSHES

- Handmade with the finest bristles
- Easy to clean & quick drying
- Corrosion resistant ferrule
- Ergonomic design for comfort

- **Håndlavede med de fineste hår**
- **Lette at rense og tørrer hurtigt**
- **Rustfrit skaff**
- **Ergonomisk design**



Empty Brush Belt / Cinturón de brochas (vacío) /  
Ceinture de pinceaux vide BDC-MAKEUPTOOL



Empty Brush Roll  
Estuche enrollable para brochas (vacío)  
Trousse de pinceaux vide  
BDC-BRUSH ROLL



Brush Roll  
Estuche enrollable para brochas  
BD-CL-KIT20



**Foundation** / Base / Fond de teint  
Sku# 1007



**Fan** / El Bianco / Le Fan  
Sku# 1026



**Buffing** / Difuminado / Éventail  
Sku# 1023



**Blush** / Colorete / Blush  
Sku# 1000



**Contour** / Contorneado / Contouring  
Sku# 1022



**Powder** / Polvos / Poudre  
Sku# 1009



**Flat Shader** / Punta plana / Ombreur Plat  
Sku# 1025



**Tapered Blending** / Punta redondeada / Estompeur et mélangeur  
Sku# 1024



**Eye Shadow** / Sombra de ojos / Ombreur  
Sku# 1014



**Dome Smudge** / Ahumado / Smudge dôme  
Sku# 1015



**Blending** / Difuminado y mezclado / Mélangeur  
Sku# 1013



**Angled Liner** / Delineador en ángulo / Eyeliner Biseauté  
Sku# 1016



**Lip** / Labios / Lèvres  
Sku# 1008



**Brow** / Cejas / Sourcils  
Sku# 1010



**Concealer** / Corrector / Correcteur  
Sku# 1002

bodyography® SKIN

Resurface  
Rehydrate  
Revitalize





# bodyography® SKIN

Bodyography® SKIN is designed for all skin types and promises to deliver Anti-Aging results and top of the line formulations that will visibly improve your skins elasticity and overall look. Utilizing the power of plant derived ingredients in conjunction with scientifically proven Anti-Aging and antioxidant ingredients, Bodyography®SKIN will reveal resurfaced and rejuvenated skin.

Bodyography®SKIN is formulated without Parabens, Sulfates, Phthalates and Triclosan

NOT TESTED ON ANIMALS | PETA APPROVED | GLUTEN FREE | VEGAN OPTIONS

**Bodyography™ SKIN er designet til alle hudtyper og lover at give anti-aging resultater og de bedste formulerer der synligt vil forbedre din huds elasticitet og overordnede udseende. Ved at udnytte styrken af ingredienser fra planteudtræk sammenholdt med videnskabeligt beviste anti-aging og antioxidant ingredienser, vil Bodyography™ SKIN genopbygge / genoprette og foryngre hud.**

**IKKE TESTET PÅ DYR  
PETA GODKENDT  
GLUTEN FRI  
VEGAN MULIGHEDER**

**Bodyography™ SKIN er formuleret UDEN:**

- Parabener
- Sulfater
- Phthalater
- Triclosan



## DAILY CLEANSER

147ml / 5 fl. oz. e

A Sulfate and Paraben-Free gentle cleanser that conditions the skin while removing makeup. Infused with Vitamins and extracts to lock in moisture and help protect against environmental stress and pollutants.

**En sulfat og parabene-fri mild rens der plejer huden mens den fjerner make-up.**

**Beriget med vitaminer og ekstrakter der indkapsler fugt og beskytter imod miljømæssig stress og forurening.**

**INGREDIENTS:** Aqua (Water), Sodium Lauroyl Methyl Isethionate, Sodium Cocoyl Isethionate, Cocamidopropyl Betaine, Magnesium Silicate, Hydroxypropyl starch phosphate, Palm Kernel/Coco Glucoside, Glycerol Oleate, Sodium Chloride, Zinc PCA, Fragrance (Parfum), Cetearyl Alcohol, Tetrasodium Glutamate Diacetate, Oryza Sativa (Rice) Extract, Algae (Seaweed) Extract, Glycerin, Saccharum Officinarum (Sugar cane) Extract, Salix Nigra (Black Willow Bark) Extract, Methylchlorisothiazolinone, Citrus Limon (Lemon) Fruit Extract, Citrus Aurantium Dulcis (Orange) Fruit Extract, Pyrus Malus (Apple) Fruit Extract, Camellia Sinensis (Tea) Leaf Extract, Lonicera Caprifolium (Honeysuckle) Flower Extract, Methylisothiazolinone, Lonicera Japonica (Honeysuckle) Flower Extract, Camellia Sinensis (Tea) Leaf Extract, Citric Acid, Butylene Glycol, Phospholipids, Carbomer (Benzene Free), Sodium Hydroxide, Veronica Officinalis Extract, Tocopheryl Acetate (Vitamin E Acetate), Retinyl Palmitate (Vitamin A Palmitate), Primula Veris Extract, Polysorbate 20, Palmitoyl Tripeptide-1, Palmitoyl Tetrapeptide-7, Mentha Piperita (Peppermint) Leaf Extract, Melissa Officinalis (Lemon Balm) Leaf Extract, Malva Sylvestris (Mallow) Extract, Ascorbyl Palmitate (Vitamin C Palmitate), Alcohol, Alchemilla Vulgaris Extract, Achillea Millefolium (Yarrow) Extract, Limonene, Geraniol, Hexyl Cinnamal, 7-Hydroxycitronellal, Linalool



## BRIGHTENING & BALANCING TONER

170ml / 6 fl. oz. e

A refreshing Toner that balances, brightens, and tightens the skin. Your skin texture is restored to a healthy, smooth and lustrous glow with powerful Glycolic Acid, Multi Fruit Complex and Sodium Hyaluronate.

**En opfriskende alkoholfri toner der skaber balance, lysner og opstrammer huden. Din huds tekstur bliver genoprettet så den får en sund, glat og skinnende glød med kraftfuld Glycolic Acid, Multi Fruit Complex og Sodium Hyaluronate.**

**INGREDIENTS:** Aqua (Water), Saccharum Officinarum (Sugar cane) Extract, Polysorbate 20, Phenoxyethanol, Citrus Medica Limonium (Lemon) Fruit Extract, Sodium Hydroxide, Citrus Aurantium Dulcis (Orange) Fruit Extract, Pyrus Malus (Apple) Fruit Extract, Ethylhexylglycerin, Glycerin, Camellia Sinensis (Tea) Leaf Extract, Hexyl Cinnamic Aldehyde, Fragrance (Parfum), Lonicera Caprifolium Flower Extract, dl-Limonene (racemic), Limonene, Lonicera Japonica Flower Extract, Linalool, Prunus Persica (Peach) Fruit Extract, Algae Extract, Melaleuca Alternifolia Leaf Oil, Malic Acid, Lactic Acid, Glycolic Acid, Hamamelis Virginiana (Witch Hazel) Water, Camellia Sinensis Leaf Extract, Geraniol, Alcohol, Butylene Glycol, Citral, Sodium Hyaluronate, Phospholipids, Carbomer, Tocopheryl Acetate (Vitamin E Acetate), Retinyl Palmitate (Vitamin A Palmitate), Palmitoyl Tripeptide-1, Ascorbyl Palmitate (Vitamin C Palmitate), Palmitoyl Tetrapeptide-7, CI 17200 (D&C Red 33), CI 42090 (FD&C Blue 1 Lake)



## OVERNIGHT SERUM

Net Wt. 28g / 1oz. e



An intense Anti-Aging treatment serum containing collagen and natural extracts that fight off free radicals, helping prevent new wrinkles from forming and helps promote skin rejuvenation.

**En intens anti-aging treatment serum der indeholder collagen og naturlige ekstrakter der bekæmper de frie radikaler, og derved forebygger nye rynker fra at sætte sig og fremmer hudforyngelsen.**

**INGREDIENTS:** Aqua (Water), Camellia Sinensis (Tea) Leaf Extract, Echinacea Purpurea (Purple Coneflower) Extract, Bambusa Vulgaris (Bamboo) Extract, Pisum Sativum (Pea) Extract, Glucosamine HCl, Ceramide 2, Caprylyl Glycol, Acetyl Hexapeptide-8, Algae Extract, Hydrolyzed Yeast Protein, Sodium PCA, Dioscorea Villosa (Wild Yam) Root Extract, Rice Ferment Filtrate (Sake), Sodium Hyaluronate, Saccharum Officinarum (Sugarcane) Extract, Pyrus Malus (Apple) Fruit Extract, Copper PCA, Glycerin, Glutathione, Acetyl Cysteine, Dimethylaminoethanol tartrate (DMAE), Chlorphenesin, Benzoic Acid, Phenoxyethanol



## UNDER EYE THERAPY

Net Wt. 6.15g / .21oz. e



A revolutionary eye treatment containing maximum levels of Haloxyl, scientifically proven to diminish dark circles and puffiness.

**En revolutionerende eye treatment der indeholder et maximum af Haloxyl, der videnskabeligt bevist mindsker mørke rander og hævelser.**

**INGREDIENTS:** Aqua (Water), N-hydroxysuccinimide, Chrysin, Palmitoyl Tripeptide-1, Palmitoyl Tetrapeptide-7, Isopentylidol, Glycosaminoglycans, Avena Sativa (Oat) Kernel Extract, Camellia Sinensis (Tea) Leaf Extract, Cucumis Sativus (Cucumber) Extract, Guar Hydroxypropyltrimonium Chloride (Guar Gum), Glycerin, Steareth-20, PEG-12 Dimethicone, Caffeine, Biosaccharide gum-4, Chlorphenesin



## EYE SERUM

Net Wt. 19g / 0.6oz. e



Improves and protects the skin from environmental stresses using rare extracts and minerals, that help reduce lines over time.

**Forbedrer og beskytter huden mod miljømæssig stress ved hjælp af sjældne ekstrakter og mineraler, der med tiden hjælper til at reducere linjer.**

**INGREDIENTS:** Aqua (Water), Cetearyl Olivat, Sorbitan Olivat, Helianthus Annuus (Sunflower) Seed Oil, Avena Sativa (Oat) Kernel Extract, Sorbitan Laurate, Hydroxyethylcellulose, Acetyl Diipeptide-1 Cetyl Ester, Pyrus Malus (Apple) Fruit Extract, Butyrospermum Parkii (Shea) Butter, Hydrolyzed Oat Protein, Niacinamide, Adenosine Triphosphate, Cetyl Palmitate, Sorbitan Palmitate, Sorbitan Olivat, Ethylhexyl Olivat, Glycerin, Dimethicone, Caprylic/Capric Triglyceride, Spilanthes acmella flower extract, Vinyl Dimethicone/Methicone Silsesquioxane Crosspolymer, Microcrystalline Cellulose, Cellulose Gum, Aminoguanidine HCl, Decarboxy Carnosine HCl, Peumus Baldus Leaf Extract, Ocimum Basilicum (Basil) Hairy Root Culture Extract, Polygonum Cuspidatum Root Extract, Butylene Glycol, Hydrolyzed RNA, Hydrolyzed DNA, Rhododendron Ferrugineum (Swiss Alpine Rose) Extract, Sodium Phosphate, Menadione, Lecithin, Sodium Polyacrylate, Hydrogenated Polydecene, Trideceth-6, Tetrahexyldecyl Ascorbate, Silica, CI 77891 (Titanium Dioxide), Tin Oxide (CI 77861), Disodium EDTA, Phenoxethanol, Caprylyl glycol, Chlorphenesin



## AM/PM MOISTURIZER

Net Wt. 50g / 1.7oz. e



A luxurious cream formulated to moisturize, firm, and lift the skin. Peptides and Amino Acids provide Anti-Aging benefits and increased elasticity.

**En luksuriøs creme der er formuleret til at give fugt, stramme op og løfte huden. Peptides og Amino Acids giver anti-aging fordele og øget elasticitet.**

**INGREDIENTS:** Aqua (Water), Linoleic Acid, Butyrospermum Parkii (Shea) Butter, Phospholipids, Cyclopentasiloxane, Cetearyl Methicone, Dimethicone, Isopentylidol, Santalum Album (Sandalwood) Extract, Phellodendron Amurense Bark Extract, Hordeum Distichon (Barley) Extract, Polyglyceryl-2 Stearate, Hydrogenated Lecithin, Glucosamine HCL, Algae Extract, Saccharomyces Cerevisiae (Yeast) Extract, Tribehenin, Ceramide-2, Brassica Campestris (Rapeseed) Seed Oil, Palmitoyl Oligopeptide, Palmitoyl Tetrapeptide-7, Phaseolus Lunatus (Green Bean) Seed Extract, Aminobutyric Acid, Squalane, Manganese Gluconate, Phytosteryl Isostearate, Aloe Barbadensis (Aloe Vera) Leaf Extract, Stearyl Phosphate, Tetrahexyldecyl Ascorbate, Perfluorodecalin, Calcium Hydroxymethionine, 3-Aminopropane Sulfonic Acid, Sodium PCA, Xanthan Gum, Perfume Grapetruif Bergamot, Panthenyl Triacetate, Tourmaline, Tocopheryl Linoleate, CI 77891 (Titanium Dioxide), CI 77947 (Zinc Oxide), Phenoxyethanol, Chlorphenesin, Coumarin, Limonene, Eugenol, Hexyl cinnamaldehyde, Linalool



## NIGHT TREATMENT

Net Wt. 50g / 1.7oz. e



An elegant night cream that locks in moisture as it combats the appearance of lines and wrinkles with nourishing Peptides and Wild Yam.

**En elegant natcreme der indkapsler fugt samtidig med at den bekæmper synligheden af linjer og rynker med nærende Peptides og Wild Yam.**

**INGREDIENTS:** Lavandula angustifolia (Lavender) Extract, Helianthus Annuus (Sunflower) Extract, Butyrospermum Parkii (Shea) Butter, Squalane, Phospholipids, Isopentylidol, Santalum Album (Sandalwood) Extract, Phellodendron Amurense Bark Extract, Hordeum Distichon (Barley) Extract, Glucosamine HCL, Hydrogenated Lecithin, Algae Extract, Saccharomyces Cerevisiae (Yeast) Extract, Urea, Phenoxyethanol, Tribehenin, Ceramide 2, Brassica Campestris (Rapeseed) Seed Oil, Thymus Vulgaris (Thyme) Flower/Leaf Extract, Hydrolyzed Lupine Protein, Palmitoyl Oligopeptide, Palmitoyl Tetrapeptide-7, Phaseolus Lunatus (Green Bean) Seed Extract, Caprylic/Capric Triglyceride, Spilanthes acmella flower extract, Terpenone, Phytosteryl Isostearate, Aloe Barbadensis (Aloe Vera) Leaf Extract, Dioscorea Villosa (Wild Yam) Root Extract, Linoleic acid, Stearyl Phosphate, Tetrahexyldecyl Ascorbate, Sodium PCA, Perfluorodecalin, Xanthan Gum, Panthenyl Triacetate, Tocopheryl Linoleate, Caprylyl Glycol, Chlorphenesin



## HYDRATING MASK

Net Wt. 55g / 1.9oz. e



Formulated with Age-Defying antioxidant fruit and plant extracts, this mask drenches and hydrates your skin, while improving the texture, reducing dryness and fine lines.

**Formuleret med alders trodsende antioxidant frugt og plante ekstrakter, giver denne maske masser af fugt, mens den forbedrer hudens tekstur, reducerer tørhed og fine linjer.**

**INGREDIENTS:** Camellia Sinensis (Tea) Leaf Extract, Saccharum Officinarum (Sugarcane) Extract, Citrus Medica Limonum (Lemon) Fruit Extract, Pyrus Malus (Apple) Fruit Extract, Xylitol, Sodium Polyacrylate, Hydrogenated Polydecene, Trideceth-6, Glycerin, Hyaluronic Acid, Citrullus vulgaris (Watermelon) Fruit Extract, Lens Esculenta (Lentil) Fruit Extract, Sodium PCA, Sodium Lactate, Ethylhexyl Olivat, Betaine, Sorbitol, Glycine, Alanine, Proline, Serine, Threonine, Arginine, Lysine, Glutamic Acid, Phenoxyethanol, Caprylyl Glycol, Chlorphenesin, Menthoxypropanediol, Perfume Watermelon #FN312622, CI 75470 (Carmine), Mica (CI 77019), CI 77891 (CI Titanium Dioxide), Phytic Acid



## MICRODERMABRASION SCRUB

Net Wt. 56g / 2oz. e



Resurfacing and revitalizing treatment using natural mineral crystals from the Dead Sea leaving skin fresh and radiant.

**Hudfornyende og revitaliserende behandling der bruger mineral krystaller fra Det Døde Hav og efterlader huden frisk og strålende.**

**INGREDIENTS:** Magnesium Oxide (CI 77711), Sodium Bicarbonate, Olea Europaea (Olive) Fruit Oil, Oleth-20, Glycerin, Trihydroxystearin, Glyceryl Stearate, Ascorbyl Palmitate, Tetrahexyldecyl Ascorbate, CI 77947 (Zinc Oxide), Mentha Piperita (Peppermint) Oil, Tocopheryl Acetate, Prunus Amygdalus Dulcis (Sweet Almond) Oil, Squalane, Retinyl Palmitate, Papain, Bromelain, Rosmarinus Officinalis (Rosemary) Extract, Anthemis Nobilis Flower Oil - (Grade Not Specified), Lavandula Angustifolia (Lavender) Oil, Limonene, Linalool



bodyography™ SKIN

HYDRATING MASK

Net Wt. 55g / 1.9 oz. e

MADE IN USA

## COCONUT MILK SERUM

Net Wt. 29 ml / 1 fl oz



A light and soothing Coconut Milk Serum for daily use. Infused with hydrating Coconut Milk full of Potassium and moisture. A Radiance Blend helps stimulate circulation and oxygenation for a healthy glow, brighter and more translucent skin.

**Opstrammer, lysner og fugter huden til daglig brug. Indeholder fugtgivende Coconut Milk Serum og er med Foryngrende Peptide der øger elasticiteten og reducerer rynker og linjer. Stimulerer cirkulationen og iltningen for en sund glød og indeholder Goji Berry, vitamin A, C & E, Argan og Jojoba Oil som fugter**

**INGREDIENTS:** Aqua (Water), Glycerin, Cyclopentasiloxane, Hydrolyzed Soy Protein, C14-22 Alcohols, Hydroxyethyl Acrylate/Sodium Acryloyldimethyl Taurate Copolymer, C12-20 Alkyl Glucoside, Cocos Nucifera (Coconut) Oil - N.O.S, Isohexadecane, Mucor Miehei Extract, Ethylhexylglycerin, Phenoxyethanol, Xanthan Gum, Simmondsia Chinensis (Jojoba) Seed Oil, Lycium Barbarum Fruit Extract, Crambe Abyssinica Seed Oil, Polysorbate 60, Tetrasodium Glutamate Diacetate, Argania Spinosa Kernel Oil, Phospholipids, Tocopheryl Acetate, Retinyl Palmitate, Ascorbyl Palmitate, Citric Acid

## INSTANT LIFT EYE MASK

3 PAIRS PER BOX



A moisturizing sheet Eye Mask to hydrate, lift and refresh the delicate under eye area. Pre-moistened eye patches contain a combination of Sodium Hyaluronate and Anti-Aging ingredients that work together to strengthen, hydrate, tighten and overall improve the skin texture in just 15-20 minutes.

**Fugtgivende maske til under øjnene. Giver fugt samt forstærker og strammer huden op.**

**INGREDIENTS:** Aqua (Water), Butylene Glycol, Glycerin, Methyl Gluceth-10, Glycosyl Trehalose, Hydrogenated Starch Hydrolysate, PEG-60 Hydrogenated Castor Oil, Xanthan Gum, Caprylyl Glycol, Phenoxyethanol, Sodium Citrate, Hexylene Glycol, Citric Acid, Sodium Hyaluronate, Saxifraga Sarmientosa Extract



## SKINCARE ROUTINE

### Morning:

1. Cleanse the skin with Daily Cleanser
2. Spray Brightening & Balancing Toner directly onto skin or cotton pad and gently wipe over skin
3. Apply Under Eye Therapy to dark circles
4. Using your ring finger apply Eye Serum and pat gently around eye area
5. Apply Coconut Milk Serum to face and neck using a light patting and circular motion
6. Gently massage AM/PM Moisturizer to face, neck, and décolleté

### Evening:

1. Cleanse the skin with Daily Cleanser
2. Spray Brightening & Balancing Toner directly onto skin or cotton pad and gently wipe over skin
3. Apply Under Eye Therapy to dark circles
4. Using your ring finger apply Eye Serum and pat gently around eye area
5. Apply Overnight Serum or Coconut Milk Serum to face and neck using a light patting and circular motion
6. Gently massage Night Treatment or AM/PM Moisturizer to face, neck, and décolleté



## ADDITIONAL WEEKLY TREATMENT:

1. Massage a thick layer of Hydrating Mask onto cleansed skin. Leave on for 15 minutes and rinse off with warm water. Begin evening routine by applying Brightening & Balancing Toner. Mask can be used once daily.
2. Dampen Skin with warm water. Gently massage Microdermabrasion Scrub in circular motion for 1-2 minutes and rinse with warm water. Microdermabrasion Scrub can be used 1-3 times per week. Begin evening routine, starting with the Brightening & Balancing Toner (Step 2).
3. Apply Instant Lift Mask to under-eye area for 15 minutes before continuing the rest of your skincare, once time is up remove and dispose of the mask and gently pat remaining product onto the eye area.



*DISTRIBUTED BY ROBANDA INTERNATIONAL*  
SAN DIEGO, CA, 92121 • (800) 783.9969 • SALES@ROBANDA.COM  
WWW.BODYOGRAPHY.COM • FOLLOW US! @BODYOGRAPHY

design  
professional

Design Professionel  
Tlf: 86 24 90 55  
[www.design-pro.dk](http://www.design-pro.dk)  
[www.bodyography.dk](http://www.bodyography.dk)